



<http://www.ncte.org/pathways>

# Pathways for Teaching & Learning with English Language Learners

<http://www.ncte.org/pathways/ell>

**NCTE** National Council of Teachers of English

1111 W. KENYON ROAD, URBANA, IL 61801-1096 PHONE: 877-369-6283

# Learning Design

Organized around questions suited for middle and high school teachers from across all content areas

- ✓ In what ways can we plan and facilitate students' language development while engaging learners in rigorous content?

*Learning Strands:*

- Establishing Purpose
- Using Academic Language
- Effective Instructional Strategies

- ✓ How can we create effective learning environments that facilitate student achievement?

*Learning Strands:*

- Cultural Awareness
- Connecting Students to the Curriculum
- Exploring Students Interactions



- ✓ How can we provide opportunities for students to use language, learn language, and learn about language?

*Learning Strands:*

- Learning Language Across the Content Areas
- Learning in the Company of Others
- Engaging Learners Through Multimodal Instruction

- ✓ How can we help students actively engage in learning?

*Learning Strands:*

- Facilitating Meaning Making and Critique
- Inviting Choice and Inquiry

# Learning Design

Begin by watching **classroom videos** and reflecting on/discussing guiding questions



Choose from a variety of podcasts, professional readings, web seminars, and web resources in the **Learning Resources**



Apply new learning in your classroom with sample assessments and planning/teaching ideas from the **Applied Learning Resources**



## Premium Access

We continually add the latest publications and resources on ELL. Here's what you can expect to have at your fingertips on your schedule:

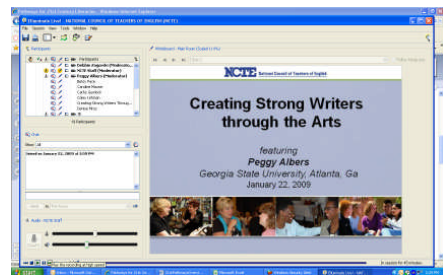
- **Videos** of classroom instruction across the academic content areas

Featured Video



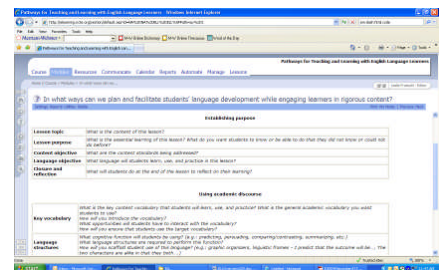
Increasing Responsibility in Foods Class

- **Podcasts** from experts in field
- **On demand web seminar events**



- **Professional readings** from across NCTE publications

- Sample **assessment tools** and **planning/teaching ideas**





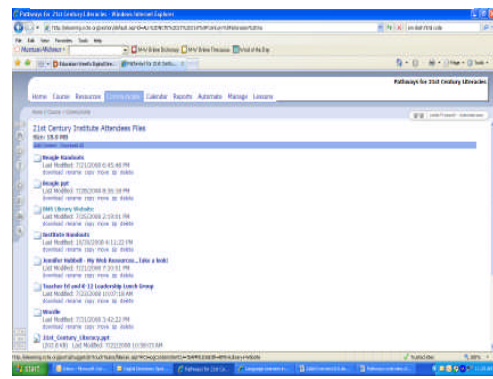
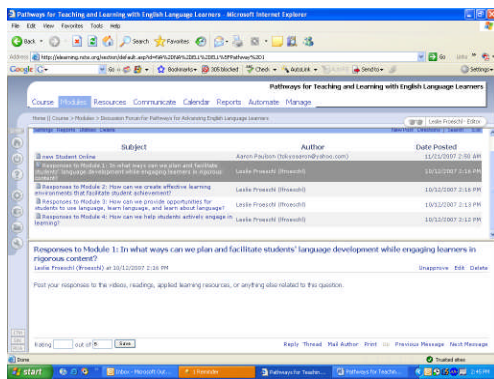
<http://www.ncte.org/pathways>

## Opportunities for Collaboration and Reflection

Pathways offers multiple opportunities for engaging collaboration with colleagues and meaningful personal reflection.

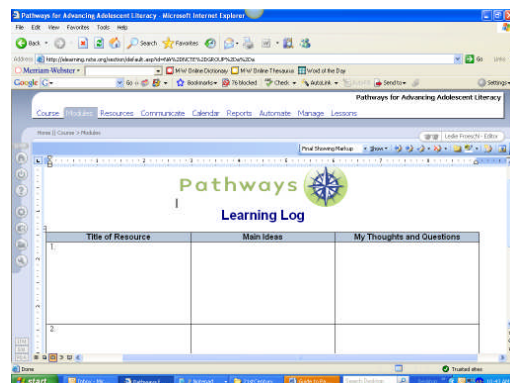
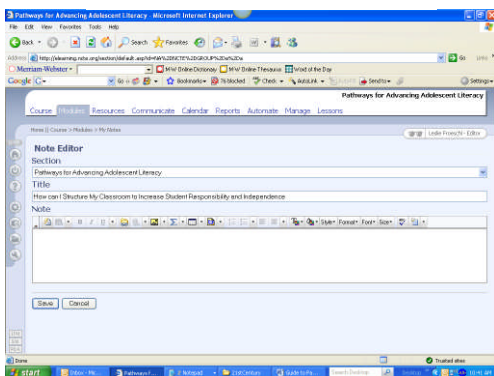
**Contribute to conversations  
in public and team  
discussion forums.**

**Share files with colleagues  
in private team repository.**



**Document thoughts  
and reflections with  
your My Notes tool.**

**Document reflections and  
new learning with the  
Pathways Learning Log.**





<http://www.ncte.org/pathways>

## Pricing and Enrollment Information

**Team or Individual Enrollment** <https://secure.ncte.org/pathways/Default.aspx>

- The Team enrollment option supports the collaborative needs of teams and provides support for the site facilitator. **Team pricing** is based on the number of team members. For example, the discounted cost of licensing for a team of 10 for one full year is \$2075. Add \$157.50 for any additional team members over 10.
- The Individual enrollment option is intended for those educators who wish to engage in a deep professional learning experience but do not have such opportunities offered through their school. **The cost for individuals is \$149 (member)/\$199 (non-member).**

### Can I Earn Credit?

Yes! A graduate continuing education credit option is available for an additional charge. Visit <http://www.ncte.org/pathways/credit> to learn more about the credit option.

### Where Do I Go To Learn More?

Visit <http://www.ncte.org/pathways/ell> or email your inquiries to [pathways@ncte.org](mailto:pathways@ncte.org).